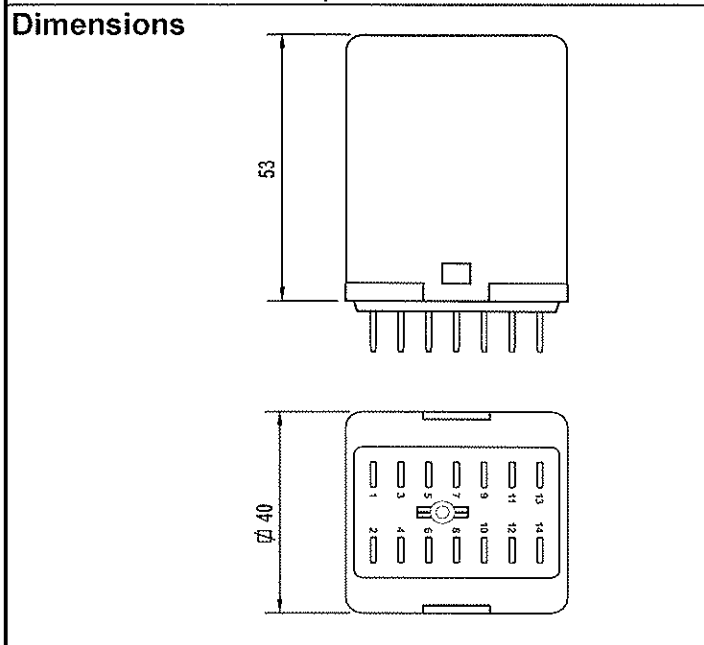
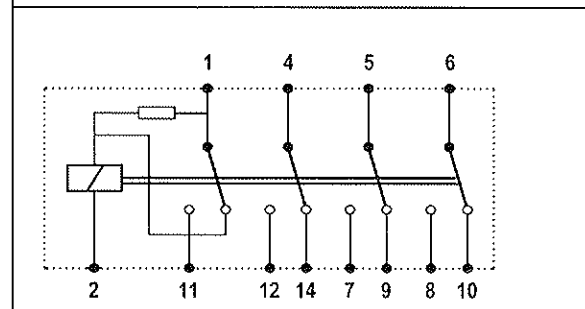


Datasheet

Product	D-R relays short pull-in time	Country of Origin: The Netherlands
----------------	---	---




 P.O. Box 7023
 3502 KA Utrecht
 The Netherlands
 T +31 (0)30-288 13 11
 F +31 (0)30-289 88 16
 E sales@nieaf-smitt.nl
 I www.nieaf-smitt.nl



Description

Plug-in relay with three change-over contacts.
 Equipped with a built-in switched series-resistor for fast pull-in time.

Coil data

Operating times at nominal voltage			
Pull-in time	7 ms	Release time	10 ms
Bounce time NO contacts	6 ms	Bounce time NC contacts	8 ms
Coil consumption	25 W at pull-in 1 W at U_{nom}		
Min. Hold-up Voltage	$0.05 \times U_{nom}$		

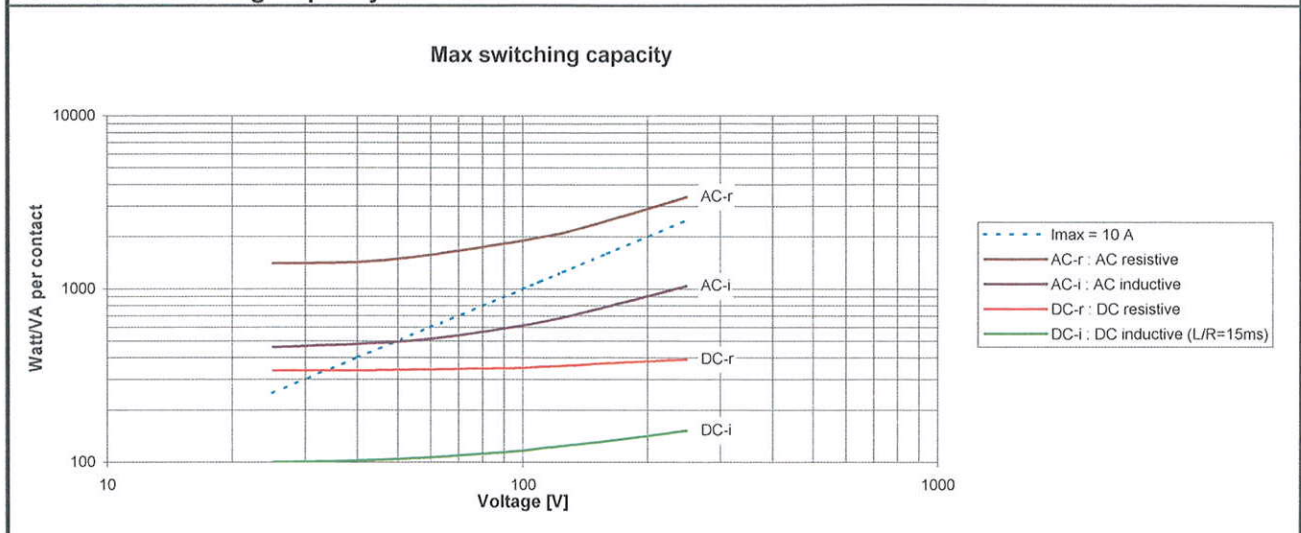
Nominal voltages DC

Type code	U_{nom}	$U_{pull\ in}$	$U_{hold\ up}$	$U_{max\ (55\ ^\circ C)}$	R_{coil}	R_{series}
D-R 24 VDC	24 V	19.2 V	1.2 V	26.4 V	23.5 Ω	560 Ω
D-R 48 VDC	48 V	38.4 V	2.4 V	52.8 V	94 Ω	2200 Ω
D-R 60 VDC	60 V	48.0 V	3.0 V	66.0 V	135 Ω	3300 Ω
D-R 110 VDC	110 V	88.0 V	5.5 V	121.0 V	510 Ω	12000 Ω
D-R 125 VDC	125 V	100.0 V	6.3 V	137.5 V	510 Ω	15000 Ω
D-R 220 VDC	220 V	176.0 V	11.0 V	242.0 V	1850 Ω	47000 Ω

Other voltages on request (only DC voltages)

Contact data			
Max. Make Current	16 A	Material	silver
Max. Cont. Current	10 A (AC1 ; IEC 947)	Contactgap	0.8 mm
Max. Breaking Capacity		Insulation between open contacts	2.5 kV, 50 Hz, 1 min
	DC 110 V, 1 A AC 440 V	Contactforce	> 200 mN
Min. Switching Voltage	12 V		
Max. Contact Resistance	15 mΩ		

Maximum Switching Capacity



General Data			
Dielectric strength	Pole-Pole	IEC 255-5/	4 kV, 50 Hz, 1 min
	Cont-Coil		2.5 kV, 50 Hz, 1 min
Insulation Class		IEC 255-5	serie C 380 V 50Hz/450 VDC
Pulse Withstanding		IEC 255-5	5 kV (1.2/50 μs)
Vibration		IEC 68-2-6	5 g at 50 Hz 2 g, 10-150 Hz
Shock		IEC 68-2-27	15 g, 11 ms
Mechanical life			$30 \cdot 10^6$ ops
Max. Switching Frequency			1200 ops/h
Weight			125 g
Temperature	$T_{amb,max}$		+55 °C, 1 cm detached Higher T on request
	$T_{amb,min}$		-25 °C
Humidity			90%, temporary permitted condensation
Protection			IP 50
Materials			Makrolon Polyester
Options			B: Magnetic arc-blow-out A: Pull-in indicator