

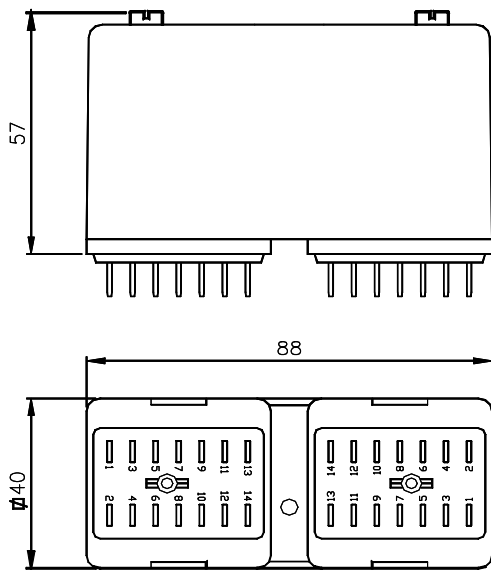
# Datasheet

# LATCHING RELAY

**Product** KDN relays

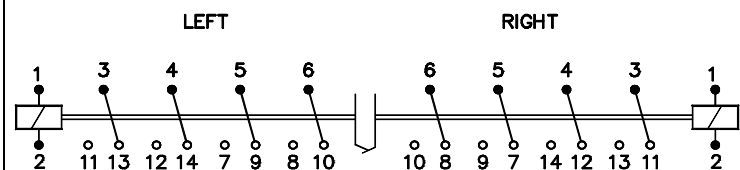
**Country of Origin:** The Netherlands

## Dimensions



P.O. Box 7023  
3502 KA Utrecht  
The Netherlands  
T +31 (0)30-288 13 11  
F +31 (0)30-289 88 16  
E sales@nieaf-smitt.nl  
I www.nieaf-smitt.nl

## CONNECTION DIAGRAM



## Description

Plug-in mechanically latching relay with eight change-over contacts.  
Equipped with position indicator.

## Coil data

### Operating times at nominal voltage

Minimum impuls time	50 ms		
Bounce time NO contacts	4 ms	Bounce time NC contacts	8 ms
Coil consumption	3.2 W at $U_{nom}$	Inductance	Energized
	3.5 VA at $U_{nom}$	L/R at $U_{nom}$ = Released	11 ms
			8 ms

### Nominal voltages DC

Type code	$U_{nom}$	$U_{pull\ in}$	$U_{max}$ (40 °C)	$R_{coil}$
KDN 12 VDC	12 V	9.6 V	13.2 V	44 $\Omega$
KDN 24 VDC	24 V	19.2 V	26.4 V	172 $\Omega$
KDN 48 VDC	48 V	38.4 V	52.8 V	691 $\Omega$
KDN 60 VDC	60 V	48.0 V	66.0 V	1070 $\Omega$
KDN 110 VDC	110 V	88.0 V	121.0 V	4055 $\Omega$
KDN 125 VDC	125 V	100.0 V	137.5 V	6160 $\Omega$
KDN 220 VDC	220 V	176.0 V	242.0 V	15000 $\Omega$

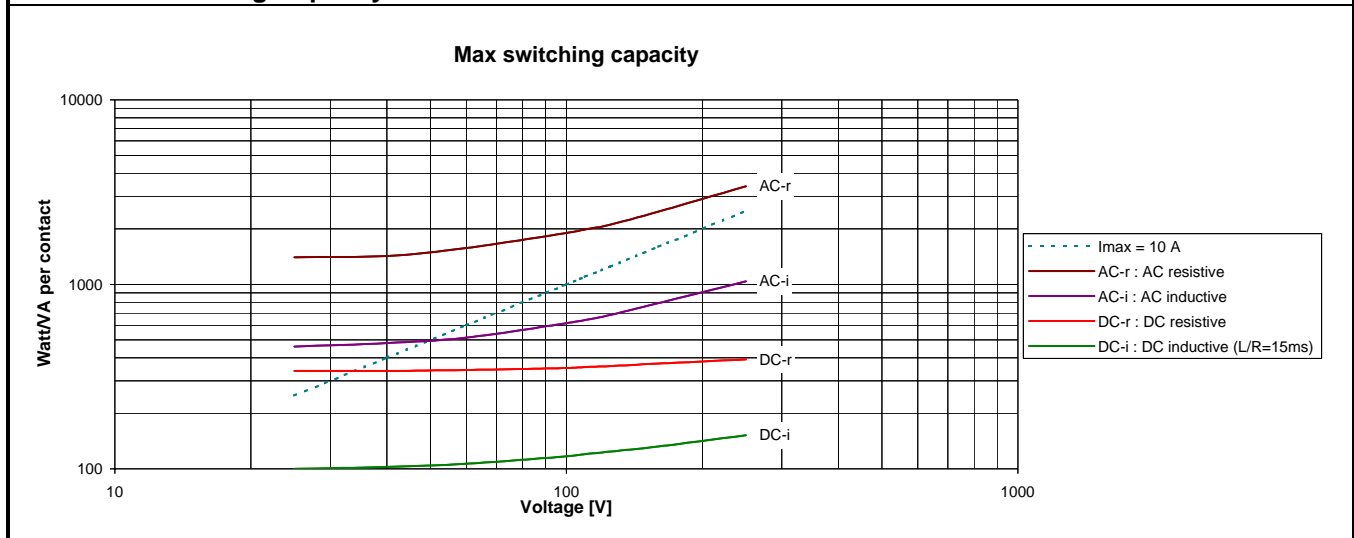
### Nominal voltages AC 50 Hz

Type code	$U_{nom}$	$U_{pull\ in}$	$U_{max}$	$R_{coil}$
KDN 24 V	24 V	19.2 V	26.4 V	34 $\Omega$
KDN 42 V	42 V	33.6 V	46.2 V	135 $\Omega$
KDN 110 V	115 V	92.0 V	126.5 V	830 $\Omega$
KDN 220 V	220 V	176.0 V	242.0 V	3200 $\Omega$

**Other voltages on request**

Contact data			
Max. Make Current	16 A	Material	silver
Max. Cont. Current	10 A (AC1 ; IEC 60947)	Contactgap	0.7 mm
Max. Breaking Capacity		Insulation between open contacts	2.5 kV, 50 Hz, 1 min
	DC 110 V, 1 A AC 440 V	Contactforce	> 200 mN
Min. Switching Voltage	12 V		
Max. Contact Resistance	15 mΩ		

#### Maximum Switching Capacity



General Data			
Dielectric strength	Pole-Pole	IEC 6055-5/	4 kV, 50 Hz, 1 min
	Cont-Coil		2.5 kV, 50 Hz, 1 min
Insulation Class		IEC 6055-5	serie C 380 V 50Hz/450 VDC
Vibration		IEC 60068-2-6	5 g at 50 Hz 2 g, 10-150 Hz
Shock		IEC 60068-2-27	15 g, 11 ms
Mechanical life			2*10 <sup>6</sup> ops
Max. Switching Frequency			1200 ops/h
Weight			320 g
Temperature	T <sub>amb,max</sub>		+40 °C
	T <sub>amb,min</sub>		+55 °C, 1 cm detached Higher T on request -25 °C
Humidity			90%, temporary permitted condensation
Protection			IP 40
Materials			Makrolon Polyester