



# *2SY112K10 Test Manual*

## *Synchronism Check Relay*

relay monitoring systems pty ltd

---

### **Advanced Protection Devices**



User Guide



Test Manual





# 2SY112K10 Test Manual

## Links to Other Documents

User Guide: [http://www.rmspl.com.au/userguide/2sy112\\_user\\_guide.pdf](http://www.rmspl.com.au/userguide/2sy112_user_guide.pdf)

## Test Certification

Made in Australia

This is to certify that the equipment detailed below has been manufactured, inspected & tested in accordance with a Quality System which complies with the requirements of AS/NZS ISO9001-2008.

Order Number	Serial Number

Only valid when the "Passed" box has been signed off by Production Personnel.

## Version Control

Issue	Date	Summary of changes
A	22/02/2010	Released.

Due to RMS continuous product improvement policy, this information is subject to change without notice.  
This document is uncontrolled and subject to copyright.

Author	Checked & Registered	.pdf file created	Released
DG	DHW	DG	



**1.0 HARDWARE SPECIFICATIONS – 2SY112K10 [B][C][C][S]**

- 1.1 Auxiliary Supply** [B] 40 - 275 VAC, 40 - 300 VDC
- 1.2 Group 1 Status Inputs** [C] 150 – 300V
- 1.3 Remote Reset** [C] 150 – 300V
- 1.4 Non-Standard Features**  
Hardware specifications not described in Technical Bulletin. [S] Bus & Line volts = 400/230VAC

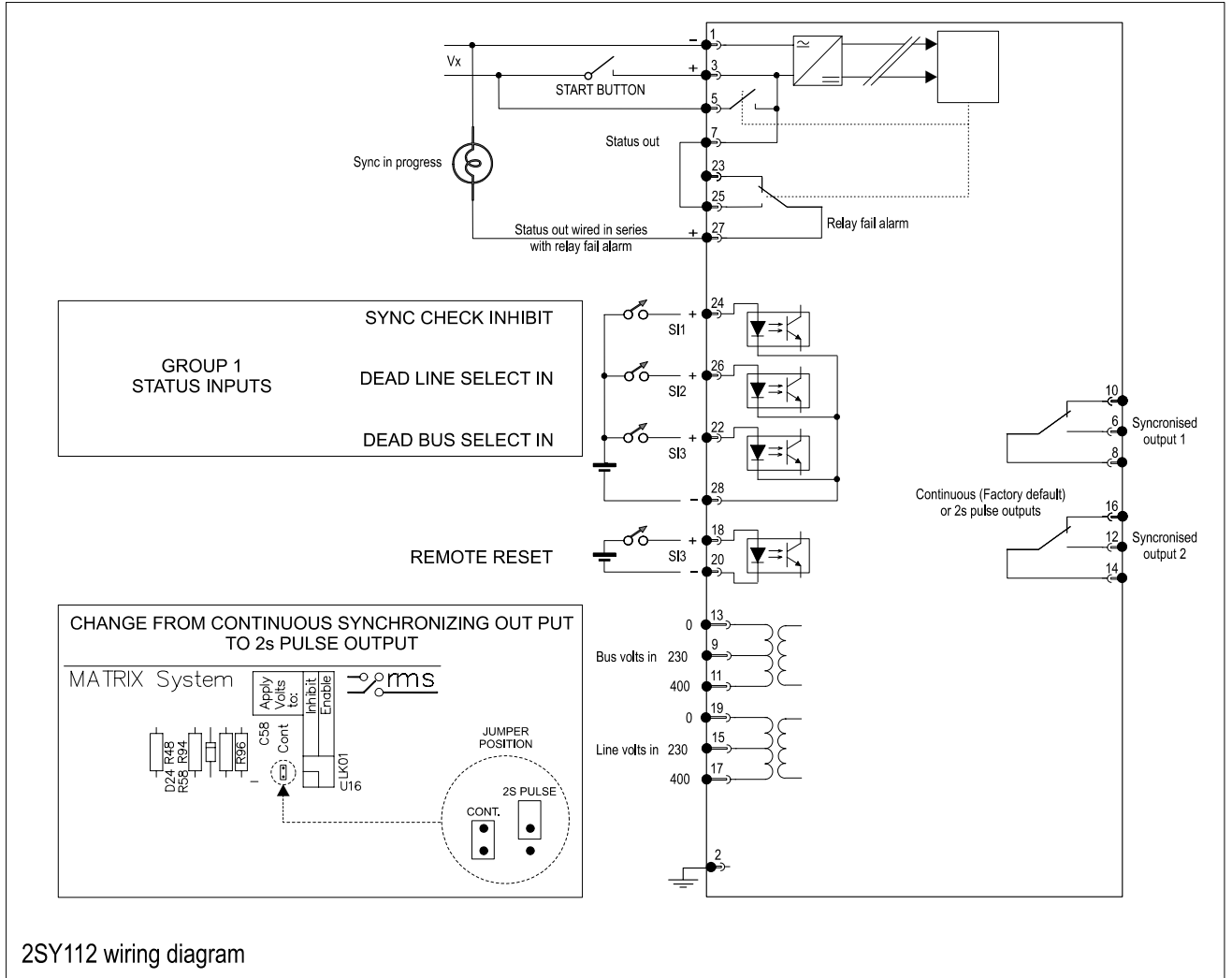
**2.0 VERIFICATION**

This is to certify that the equipment has been manufactured, inspected and tested in accordance with a Quality System, which complies with the requirements of ISO9001: 2008.

Testing has been carried out against the declared performance specification 171-112-800 and in accordance with the relevant International (IEC) Standards.

PASSED BY	DATE

**3.0 CONNECTION DIAGRAM**



2SY112 wiring diagram